

# MAGNET 3D KITCHEN PLANNER CHECK LIST

Please note - the Magnet Kitchen Planner currently only supports Windows XP,Vista and Windows 7 while using Internet Explorer 7.0 and Internet Explorer 8.0

When you first launch the Magnet Kitchen Planner a separate window will open which will contain the Kitchen planner. You may briefly see the screen on the below (fig1)



FIG 1

If you have not previously used the Magnet Kitchen Planner you will be presented with the window seen below, (fig2). This window allows you to download the software components required to use the Magnet Kitchen Planner. You need to click the “Install now” button to proceed.

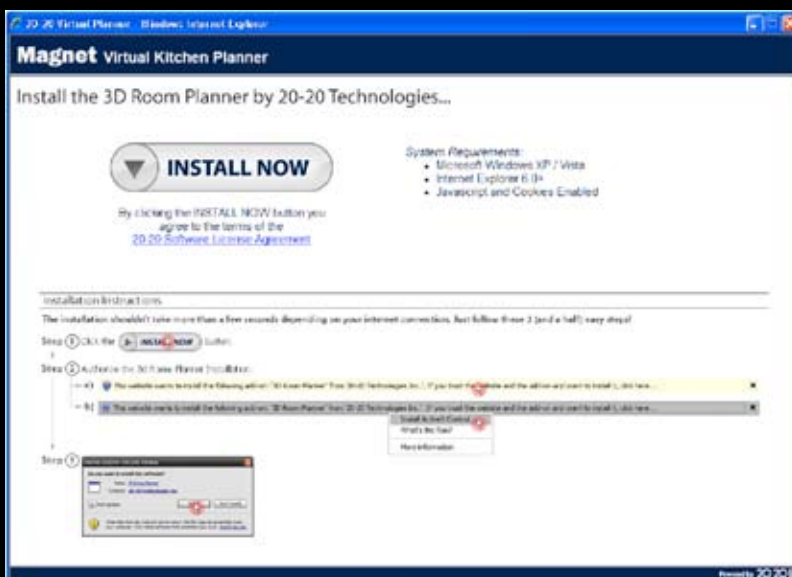


FIG 2

If you follow the instructions on this screen you will be asked to authorise “the 3D room Planner Installation”. You will then be prompted to “Install ActiveX control”. This will download the software required from the Magnet Website. You will then be prompted to Install the “3D Room Planner” software.

# MAGNET 3D KITCHEN PLANNER CHECK LIST

After you have completed this Installation you will be taken into the Planner screen (fig.3) where you chose to open the sample kitchen Design or start a design from an empty room.

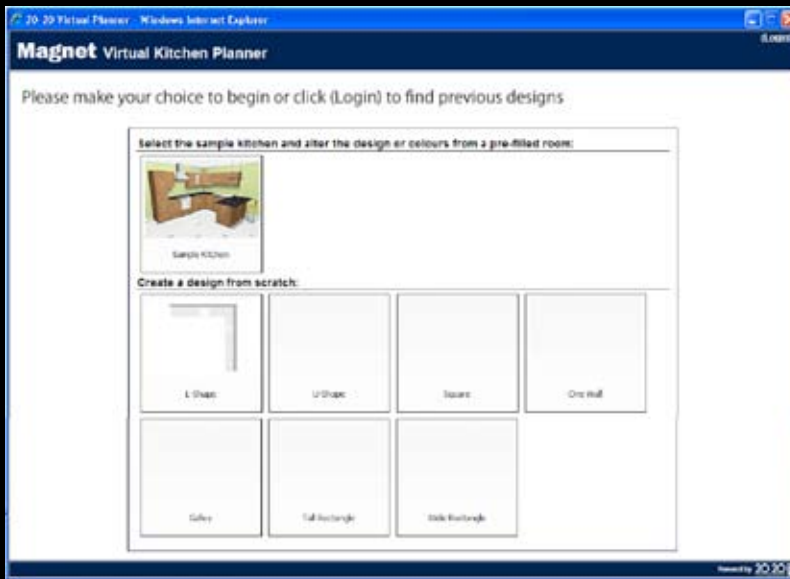


FIG 3

When you have selected the room that you want to work with, click on the image and you will then be taken into the design screen (fig.4).

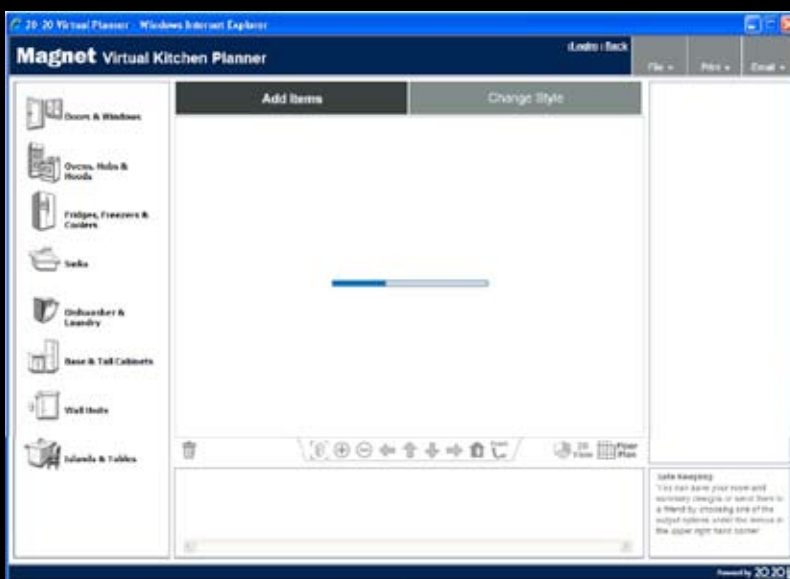


FIG 4

You should see the "loading bar" showing that the design is being downloaded.

# MAGNET 3D KITCHEN PLANNER CHECK LIST

When the Design has been downloaded you should see the design in the middle of the Planner screen as seen in fig.5

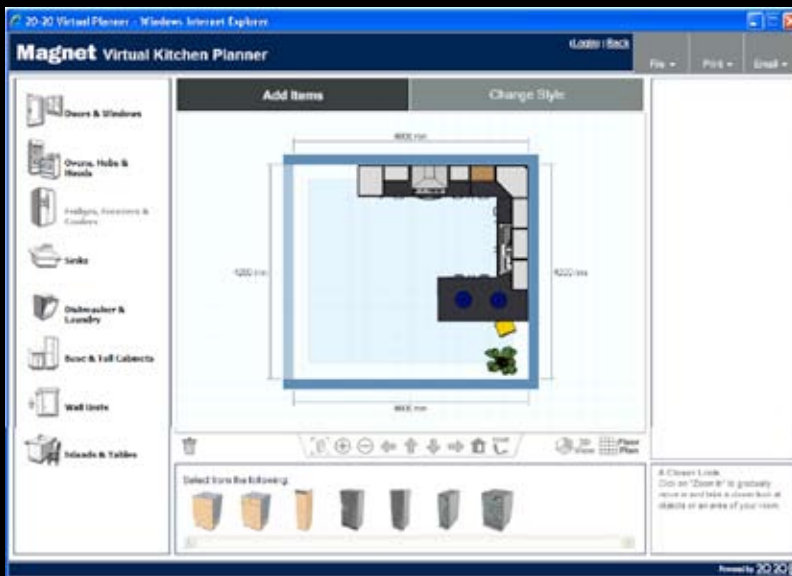
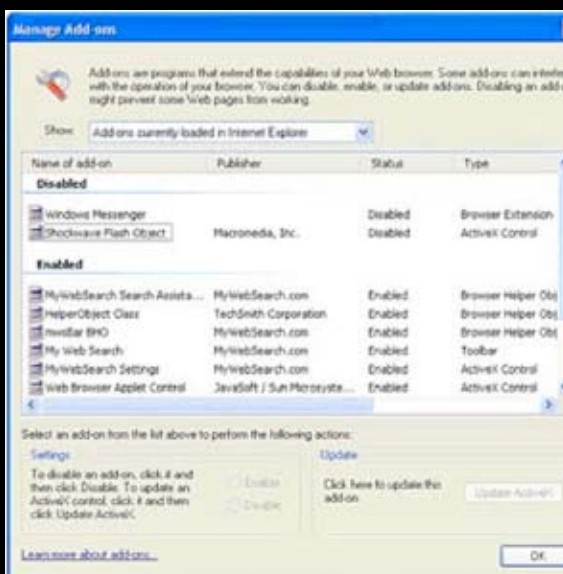


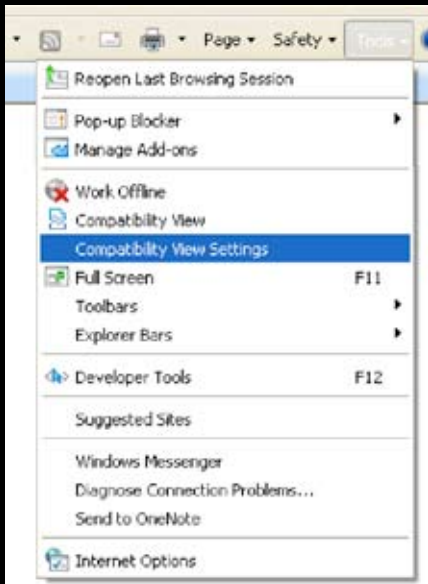
FIG 5

If you want to check whether the 20-20 software has been installed on your system, then check your Internet explorer add-ons (see Microsoft support link [www.microsoft.com/windowsxp/using/web/sp2\\_addonmanager.msp](http://www.microsoft.com/windowsxp/using/web/sp2_addonmanager.msp))



# MAGNET 3D KITCHEN PLANNER CHECK LIST

If you are still experiencing issues and you are using Internet Explorer 8.0 Please try the following  
Click Tools then CompatibilityView Settings



Enter \*.2020.net then Click Add



Click Close, then close internet explorer and reload the Planner Website